



POSH GAYA 保時雅



3,600 BHP / Utility Tug Vessel

Call Sign: TBC

Class Notation

Bureau Veritas (BV) I + HULL + MACH Tug ; Supply Vessel ; Fire fighting ship 1- water spraying; Utility Vessel Unrestricted navigation CR class,

Principal Particulars

Flag	The Republic of China (Taiwan)
Year Built	2008
Design Draft	4.00 m
Gross Tonnage	1,031 T
Net Tonnage	309 T
IMO No.	9522453

Main Machinery & Propulsion

Main Engine	2 x Yanmar 8N21A -ENx1,800 HP@900rpm Total :3,600 BHP
Main Genset	2 x CAT 3406C 215Kw/415V/3ph/50Hz
Emergency Genset	1 x CAT C4.4 85Kw/415v/3P/50Hz
Propulsion	2 x CPP in fixed nozzles x 2400mm
Bow Thruster	1 x CPP, 50KN

Deck Crane & Equipment

Deck Crane	5 ton at 8.0m outreach
Towing Winch	1 x ZICOM single drum high pressure winch
Brake Holding Capacity	125 tons
Drum Wire Cap.	750 m x 46mm dia steel wire rope
Mooring lines	4 x 220m approx, 48,000kg breaking Strength
Capstan	2 x 5 tons
Tugger Winch	2 x 10 tons
Stern Roller	3.0m x 1.5 m dia. SWL 100 tons

Dimensions

Length Overall	49.00 m
Beam Overall	13.20 m
Depth Moulded	5.30 m
DWT	908.05 tons
Draft – Light	Approx 4.00 m / Loaded: 4.50 m

Performance

Max Speed	11.00 kts
Economical Speed	8.00 kts

* Subject to actual weather and operating conditions

Cargo Deck

Deck Cargo Area	230 m ² (23 m x 10 m)
Deck Cargo Capacity	400 tons
Deck Strength	5.0 T/m ²

Refrigerated Storage

Freezer / Cool Room	Approx 10 m ³ approx. (+4°C)
Chiller / Cold Room	Approx 12 m ³ approx. (-18°C)

Capacities

Fuel Oil	650.9 m ³ / 784.33MT
Fresh Water	313 m ³ / 313MT
Water Ballast	91 m ³ / 88.82MT
Lube Oil Storage	12.9 m ³

Accommodation

1 x 4 men/ berth cabins = 4 men
3 x 2 men/ berth cabins = 6 men
5 x 4 men/ berth cabins = 20 men
Total = 30 men
Wheelhouse equipped with toilet.

Bollard Pull

Approx : 50 tons at 100 % MCR

Fire Fighting and Anti- Pollution

Pump	2 x 1450 m ³ /hr at 140 mlc
Monitor	2 with remote control
Sprinkler System	FiFi 1 Class requirement
Oil Dispersant Boom	1 set
Dispersant Tank	Approx. 11.7 m ³
Foam Tank	Approx. 11.7 m ³

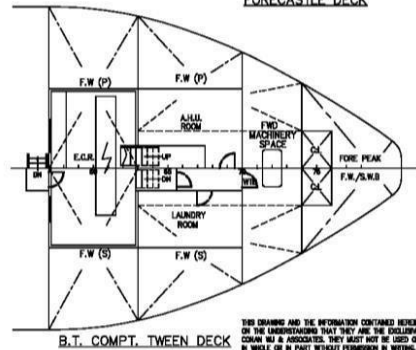
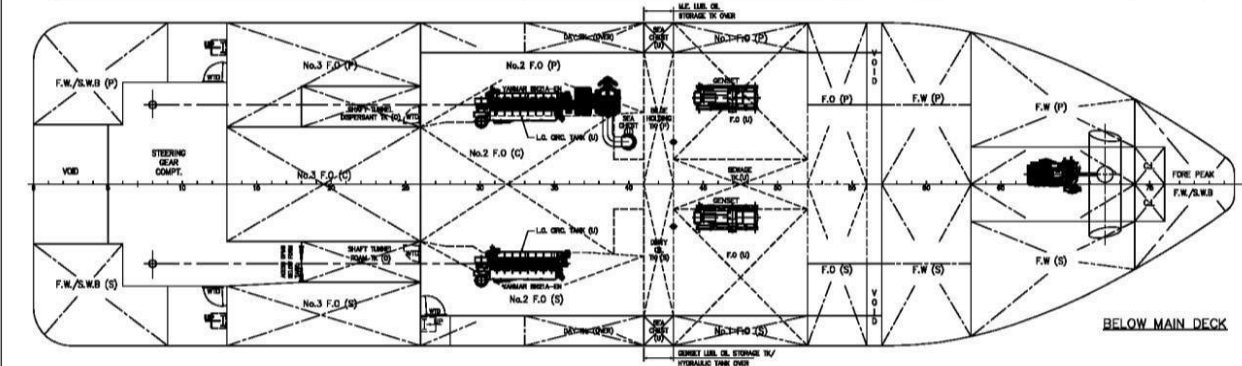
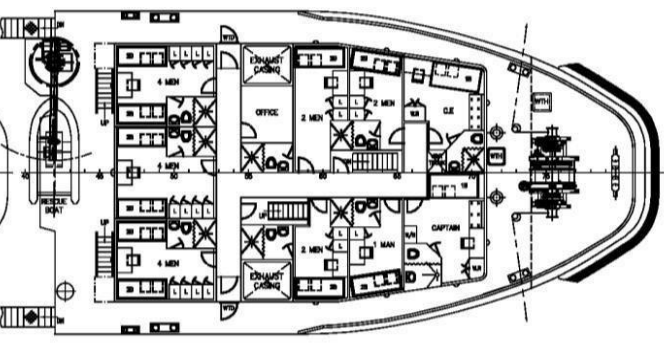
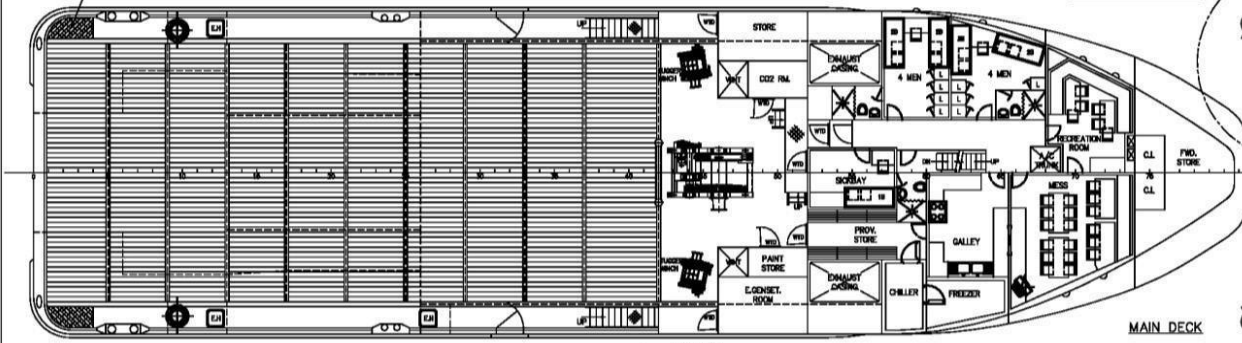
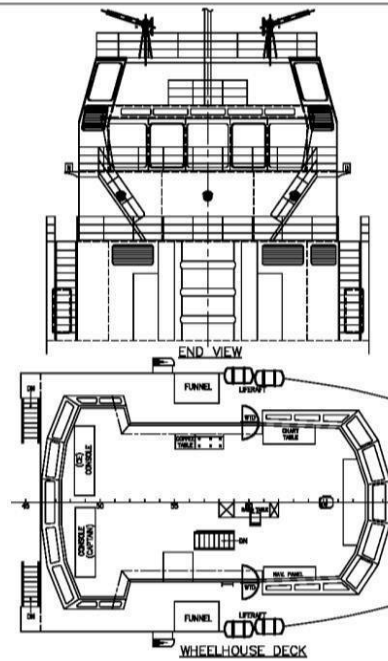
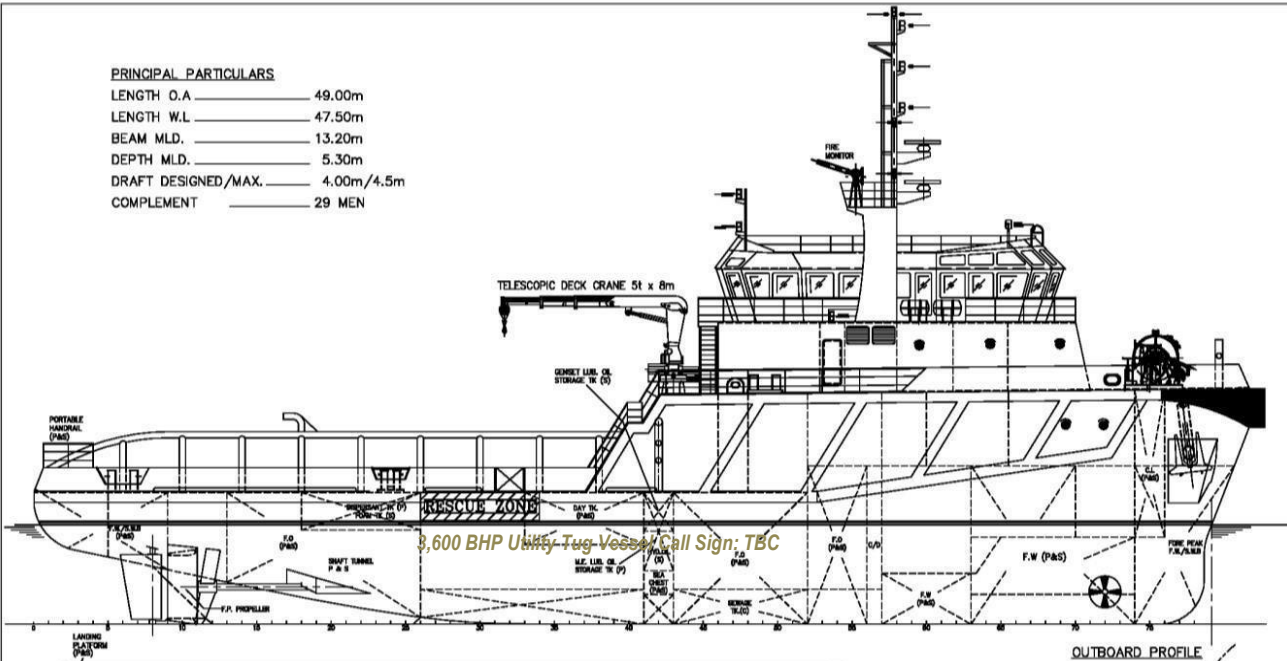
Cargo Pump Capacity

Bilge & Ballast pump	1 x 60m ³ /hr @ 65m head
Reefer Power Point	8 x 16/Amp , 415/3/50
G.S. Fire pump	1 x 60m ³ /hr @ 65m head
Emergency Fire pump	1 x 60m ³ /hr @ 60m head
Dirty oil pump	1 x 5m ³ /hr @ 45m head
F.O. transfer pump	2 x 5m ³ /hr @ 20m head
F.O. cargo pump	1 x 100m ³ /hr @ 90m head
F.W. cargo pump	1 x 100m ³ /hr @ 90m head
Oily water separator	1 x 1.0m ³ /hr @ 15ppm

GA PLAN : POSH GAYA

PRINCIPAL PARTICULARS

LENGTH O.A.	49.00m
LENGTH W.L.	47.50m
BEAM MLD.	13.20m
DEPTH MLD.	5.30m
DRAFT DESIGNED/MAX.	4.00m/4.5m
COMPLEMENT	29 MEN



DATE	MODIFICATION	REV	BY
SHIP: 49m UTILITY VESSEL			
TITLE: General Arrangement			
OWNER	YARD NO.		
BUILDER	MUHAMMAD MARINE ENGINEERING SDN BHD		
CLASS	S.V.		
CONAN WU & ASSOCIATES			
NAVAL ARCHITECTS			
INFORMATION BLDG. 5 INTERNATIONAL BUSINESS PARK, AIRPORT EAST, SINGAPORE 608914			
TEL: 1 800 980-1518 FAX: 1 800 980-7238 (S) 6461-0313 E-MAIL: info@conanwu.com			
DRAWN	ZHAN	CHECKED	APPROVED
SCALE		DRAWING NO.	
1:100		C4089D/G-1	
03.01.08			REV 10

THIS DRAWING AND THE INFORMATION CONTAINED HEREIN ARE SUPPLIED ON THE UNDERSTANDING THAT THEY ARE THE EXCLUSIVE PROPERTY OF CONAN WU & ASSOCIATES. THEY MUST NOT BE USED OR REPRODUCED IN WHOLE OR IN PART WITHOUT PERMISSION IN WRITING.