

POSH TEAL



21,456 BHP / 255 TBP / DP2 AHTS Call Sign: 9V3945

Principal Particulars

Flag	: Singapore
Year Built	: 2012
Place Built	: Vietnam
Length Overall	: 91.60 m
Length B.P.	: 81.00 m
Beam Overall	: 22.00 m
Depth Moulded	: 8.80 m
Maximum Draft	: 6.80 m
IMO No.	: 9609794
Official No.	: 400589

Classification

ABS + A1, Fire Fighting Vessel Class 1, DPS, AMS, WILD, Offshore Support Vessel & Anchor Handling, SPS, Oil Recovery Class 2

Capacities

Gross Tonnage	: 6,262 tons
Net Tonnage	: 1,878 tons
Deadweight	: 4,600 tons
Fuel Oil	: 1,366.8 m ³
Potable Water	: 886.1 m ³
Drill Water/ SWB	: 2,462.8 m ³
Liquid Mud/Base Oil/ Brine	: 890.0 m ³ (6 tanks)
Dry Bulk	: 263.8 m ³ (4x 2,327 ft ³)
Chain Locker	: 540.0 m ³
Methanol	: 224.6 m ³
Foam/ Detergent	: 31.9 m ³ / 31.9 m ³
Speed	: XX knots
Endurance	: XX days towing at sea
Deck Space	: 900.0 m ²
Deck Loads	: 10 tons / m ²
Deck Cargo Capacity	: 1,200 tons

Accommodation

One Man Cabin	: 8
Two Men Cabin	: 44
Four Men Cabin	: 1
Total Complement	: 100 persons

Machinery & Equipment

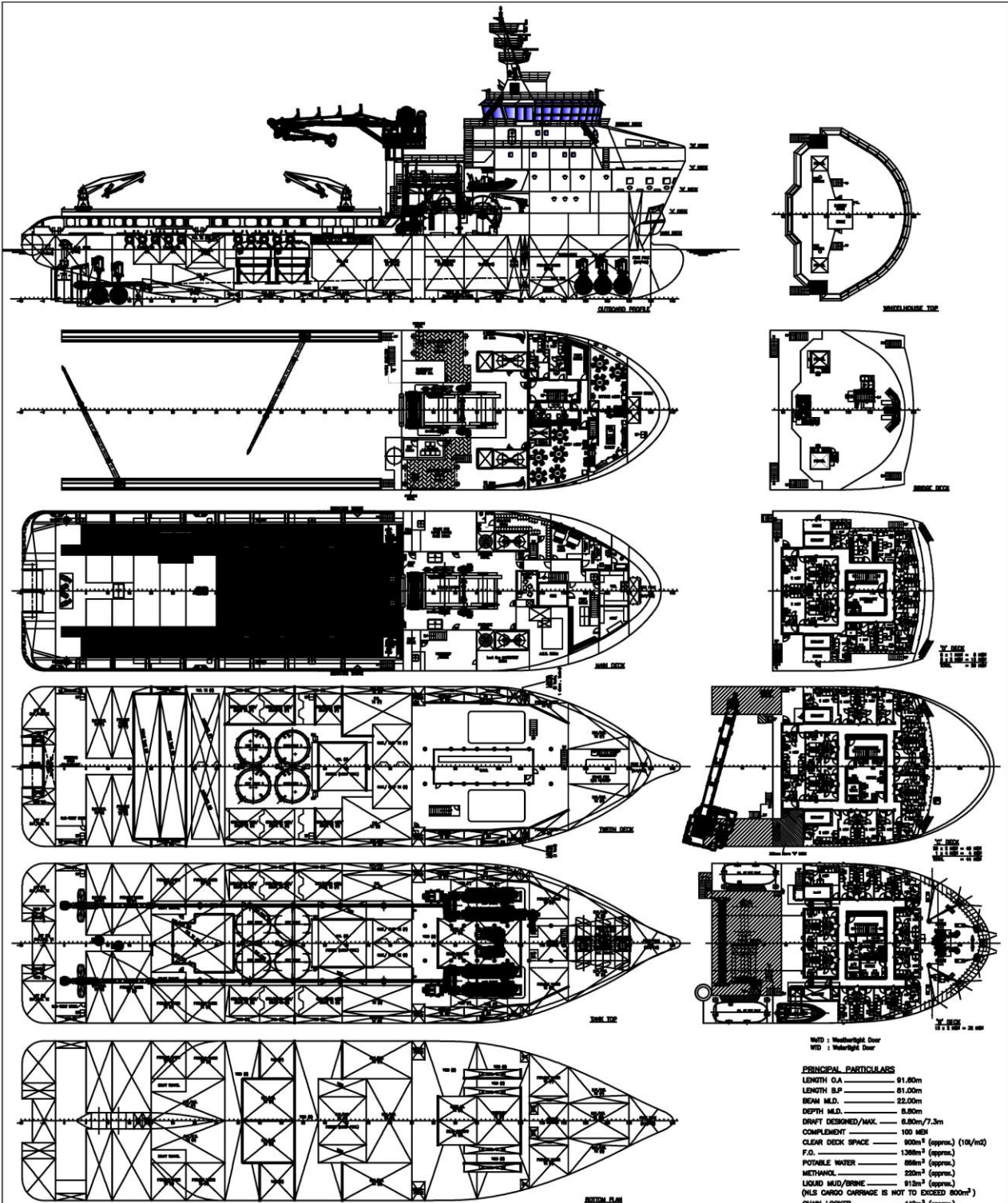
Main Engines	: 4 x MAK 8M32C, 5,364 BHP each
Total BHP	: 21,456 BHP
Propellers	: 2 x CPP, Rolls Royce
Bow Thruster	: 3 x 790 kW, 13.26 T Thrust each
Stern Thruster	: 2 x 790 kW, 13.26 T Thrust each
Bollard Pull	: 255 T @ 100% MCR
DP -2 System	: Kongsberg K-Pos DP21 System
Main Generator	: 2 x CAT C32 rated 590kW / 440V/ 60Hz/ 3Ph
Alternator	: 2 x Leroy Somer LSA 54 M85/L6P rated 2,400kW/ 440V/60HZ, 3Ph
Emergency Gen	: 1 x CAT C4.4 rated 99kW / 440V/ 60Hz/ 3Ph

Tow/Anchor handling Equipment

Tow/AH Winch	: 500T Brake, 400 T Pull, Brattvaag Double Drum Hydraulic Driven, Waterfall Type
Drum Capacity	: 4,000 m x 76 mm
Storage/Secondary	: 2 x 4,000 m x 76 mm
Chain Gypsy	: 2 x 90 mm, Non-Declutchable
Karm Fork	: 2 x Karm Fork, SWL : 650T
Tow Pin	: 2 x Tow Pin, SWL : 300T
Stern Roller	: 6.0 m x 3.0 m, SWL : 500T
Anchor Windlass	: 1 x 26 T @ 10 m/min, Brattvaag
Anchor Chain	: 2 x 275 m x 58 mm
Anchor (Bow)	: 2 x 3,240 kg HHP Anchors
Tugger Winch	: 2 x 20 T @ 10 m/min, Brattvaag
Capstan	: 2 x 9 T @ 16 m/min, Brattvaag
Deck Crane	: 2 x AH Crane, Rolls-Royce, SWL: 3T@10m – 14.3m; SWL: 5T@ 3.2m – 10m
Provisional Crane	: 1 x AHC Crane, ODIM ABAS, SWL: 20T@3.8m – 20m

FiFi 1 System

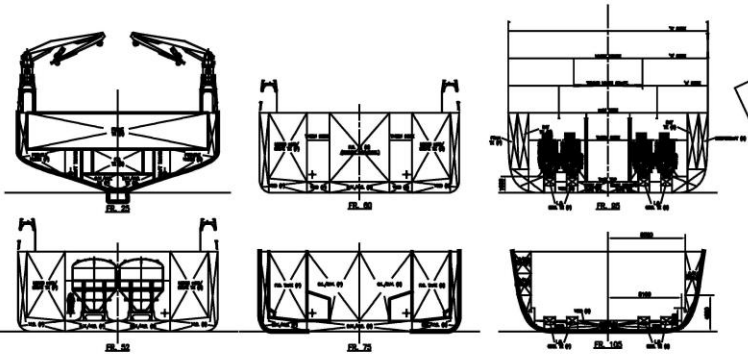
FiFi Class (1) with Water Spray Pump	: 1 x 4,250 m ³ /hr @ 12m head
Monitor(water/foam)	: 2 x 1,200 m ³ /hr / 300 m ³ /hr @ 11 bars
Oil Dispersant	: 2 x 9 m Spray Boom



W/D : Weatherlight Door
 W/D : Weatherlight Door

PRINCIPAL PARTICULARS

LENGTH O.A.	91.80m
LENGTH B.P.	91.00m
BOW M.D.	22.00m
DEPTH M.D.	8.80m
DRAFT DESIGNED/MAX.	6.80m/7.3m
COMPLEMENT	100 MEN
CLEAN DECK SPACE	900m ² (approx.) (10%/ind)
F.O.	1386m ² (approx.)
POTABLE WATER	886m ³ (approx.)
METHANOL	220m ³ (approx.)
LIQUID MUD/BRINE	912m ³ (approx.)
(NLS CHARGE CHARGE IS NOT TO EXCEED 900m ³)	
CHAIN LOCKER	446m ³ (approx.)
D.W./N.B.	3000m ³ (approx.)



AS-BUILT

21-08-12	X	HO TAN BON	AS BUILT
Date	Rev.	Approval	Description
TRIYARDS			
Project: H1001 - 92M DP2-AHTS			
Drawing Title: General Arrangement		Scale: 1/175	
Drawing Number: C4665-101-001		Size: A1	
		Sheet: 01/01	
		Revision: X	
Drawn: BUI VAN TANG	Checked: YEN NHI	Approved: HO TAN BON	
DATE: 21-08-12	MODIFICATION: 1	REV: 1	BY: HO TAN BON
TITLE: General Arrangement			
OWNER: WATSIYA SHIP DESIGN SINGAPORE PTE. LTD.	DESIGNER: WATSIYA SHIP DESIGN SINGAPORE PTE. LTD.	SCALE: 1/175	REV: 1
BUILDER: SHANGHAI SHIPYARD CO. LTD.	PROJECT NO: H1001		
WATSIYA SHIP DESIGN SINGAPORE PTE. LTD.			
11 SOUTH BRIDGE ROAD, SINGAPORE 059118, SINGAPORE			
DESIGNER: WATSIYA SHIP DESIGN SINGAPORE PTE. LTD.	SCALE: 1:250	PROJECT NO: H1001	REV: 1
CHECKED: CHIA	DATE: 21-08-12	DRAWING NO: C4665-101-001	REV: X
DATE: 21-08-12	SCALE: 1:250	PROJECT NO: H1001	REV: 1
THIS DRAWING AND THE SPECIFICATIONS CONTAINED THEREIN ARE THE PROPERTY OF WATSIYA SHIP DESIGN SINGAPORE PTE. LTD. AND SHALL NOT BE USED OR REPRODUCED IN WHOLE OR IN PART WITHOUT PERMISSION IN WRITING.			

Particulars given herein are believed to be correct but not guaranteed. Owners reserve the right to amend specifications with out notification.