

## POSH CHAMPION



**16,000 BHP / 194.28 TBP / DP2 / AHTS**      **Call Sign: 9V8180**

**Class Notation**

ABS +A1 Towing Vessel, Fire Fighting Vessel Class 1, Offshore Support Vessel AH, (E) + AMS, +ACCU, +DP-2

**Principal Particulars**

Flag	Singapore
Year Built	2011
Place Built	USC Keihin Shipyard, Yokohama, Japan
Design Draft	6.00 m
Max Draft	6.60 m
Gross Tonnage	3,261.0 T
Net Tonnage	978.0 T
Deadweight (Max Draft)	3,174.0 T @ 6.60 m draft
Displacement	6,080.0 T
IMO No.	9514274
Design	USC 180T BP AHTS No. 0056

**Dimensions**

Length Overall	75.27 m
Beam Overall	18.00 m
Depth Moulded	8.10 m

**Performance**

Max Speed	12.00 kts
Economical Speed	10.00 kts

\* Subject to actual weather and operating conditions

**Cargo Deck**

Deck Cargo Area	516.0 m <sup>2</sup>
Deck Cargo Dimension	34.4 m x 15.0 m
Deck Cargo Capacity	1,000.0 T
Deck Strength	10.0 T/m <sup>2</sup> (Aft to Fr.16); 5.0 T/m <sup>2</sup> (Fr.16 - Fr.51)
Reefer Points	8 (4 x 440v, 4 x 220v)

**Capacities**

Fuel Tank	951.58 m <sup>3</sup>
Fresh Water	590.9 m <sup>3</sup>
Drill Water *	705.8 m <sup>3</sup> (shared with ballast water)
Ballast Water *	705.8 m <sup>3</sup> (shared with drill water)
Mud Tank	434.7 m <sup>3</sup>
Brine Tank *	156.7 m <sup>3</sup> (shared with base oil)
Base Oil *	156.7 m <sup>3</sup> (shared with brine)
Dry Bulk Tank	250.0 m <sup>3</sup> (in 4 tanks)

\* Indicates tanks with shared capacity

**Discharging Rates**

Drill Water/Pump	1 x 200 m <sup>3</sup> /hr@90 m head
Fresh Water/Pump	1 x 200 m <sup>3</sup> /hr@90 m head
Fuel/Pump	1 x 150 m <sup>3</sup> /hr@90 m head
Brine/Pump	1 x 75 m <sup>3</sup> /hr@180 m head
Liquid mud/Pump	2 x 75 m <sup>3</sup> /hr@180 m head
Dry Bulk Tank	1 x 60 m <sup>3</sup> /hr@20 m head

**Accommodation**

1 – Berth Cabins	14
2 – Berth Cabins	6
4 – Berth Cabins	1
Total (POB)	30

**Main Engines & Generators**

Main Engines	Wartsila / 12V32 2 x 8,000 BHP each
Shaft Generators	AVK (Wartsila) 2 x 2,240 kW each
Diesel Generators	Caterpillar C18 / SR4 2 x 500 kW each
Emergency Generators	Caterpillar C4.4 / LSA 44.2 S7, 1 x 72 kW each

**Thrusters & Propulsion**

Bow Thruster	Kawasaki 2 x Tunnel Thruster @ 800 kW (12.0 T)
Stern Thruster	Kawasaki 1 x Tunnel Thruster @ 800 kW (12.0 T)
Propellers	Wartsila, 4 Bladed, 2 x CP Propellers in fixed nozzles
Rudders	Rolls Royce 2 x independent high lift flat type

**Deck Crane**

Fixed Crane	SWL 5.0 T @ 14.0 m radius (TTS)
Movable Crane	SWL 4.5 T @ 13.0 m radius (Triplex)

**Anchor Handling/Tow Equipment**

Tow/Anchor Handling Winch	Rolls-Royce/Reverse Waterfall/1 x SL350W/BSL350W
Stall Pull Capacity	350.0 T
Brake Holding Capacity	450.0 T @ 1 <sup>st</sup> layer of rope on the drum
Tow Drum Capacity	2,500.0 m x 77.0 mm dia wire
Anchor Handling Capacity	2,500.0 m x 77.0 mm dia wire
Secondary Winch Capacity	NIL
Storage Reel Capacity	2 x 1,500.0 m x 77.0 mm dia wire
Tugger Winch	Rolls-Royce 2 x 17.0 T each
Capstan	2 x 10.0 T each
Shark Jaws	2 x Triplex H-500 (SWL 500.0 T)
Tow Pins	2 x Triplex S-200 (SWL 200.0 T vertical)
Stern Roller	5.0 m x 3.0 m dia (SWL 500.0 T)
Gypsies	2 x 76.0 mm + 2 x 84.0 mm
Chain Locker	2 x 102 m <sup>3</sup>

**Tow/Anchor Handling Wires**

Main Tow Wire	1,500.0 m x 76.0 mm dia wire
Spare Tow Wire	1,500.0 m x 76.0 mm dia wire
Anchor Handling Wire	1,500.0 m x 76.0 mm dia wire

**Mooring Equipment**

Anchor	2 x HHP Stockless Anchor, 2,138 kg
Anchor Chain	2 x 495.0 m x 46.0 mm dia
Anchor Windlass	15 T @ 12 m/min

**Dynamic Positioning System**

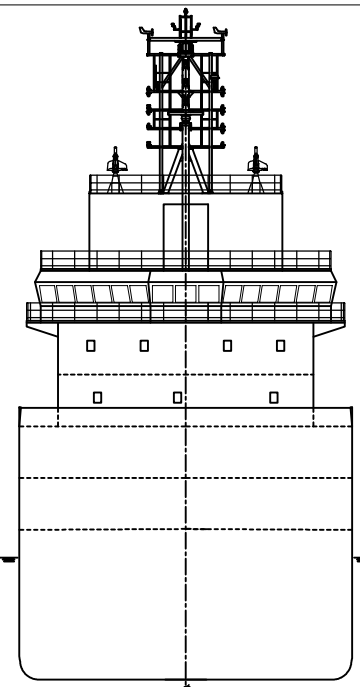
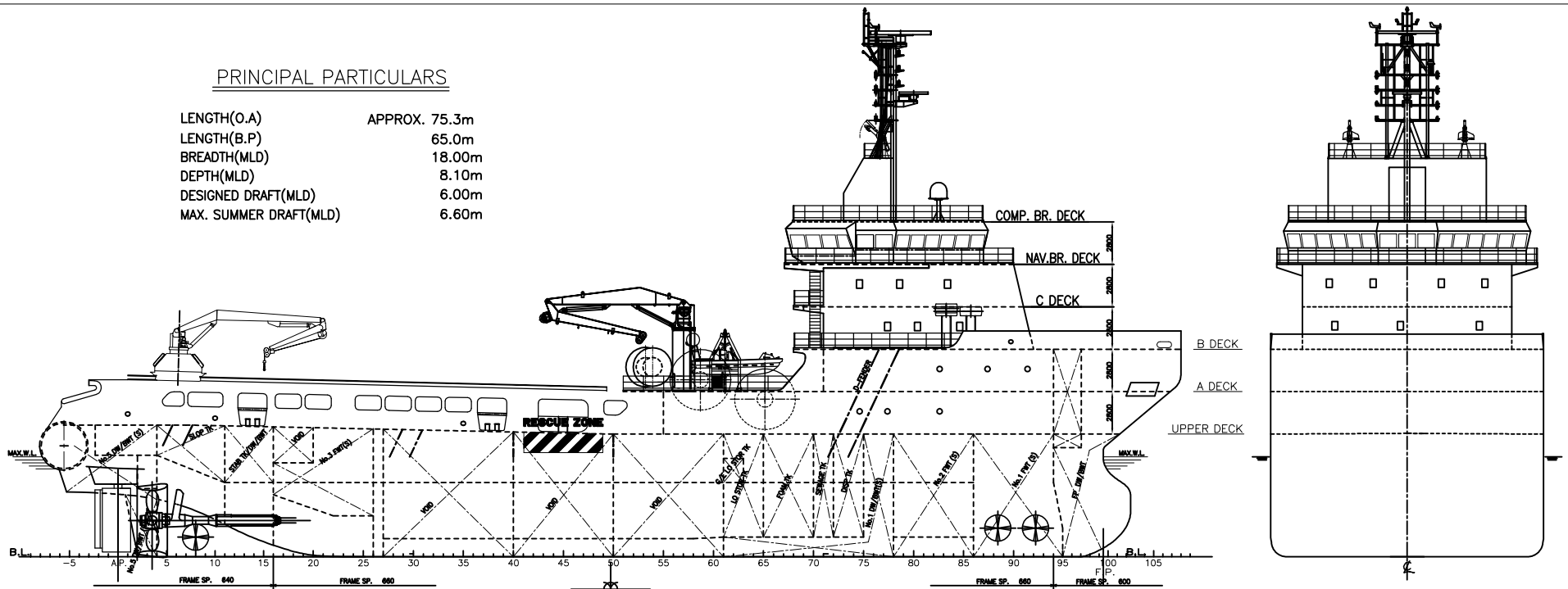
DP Class	DP 2, Converteam ADP21 - Independent Joystick
References	2 x DGPS + 1 x Cyscan
VRU	2

**Fire Fighting and Rescue**

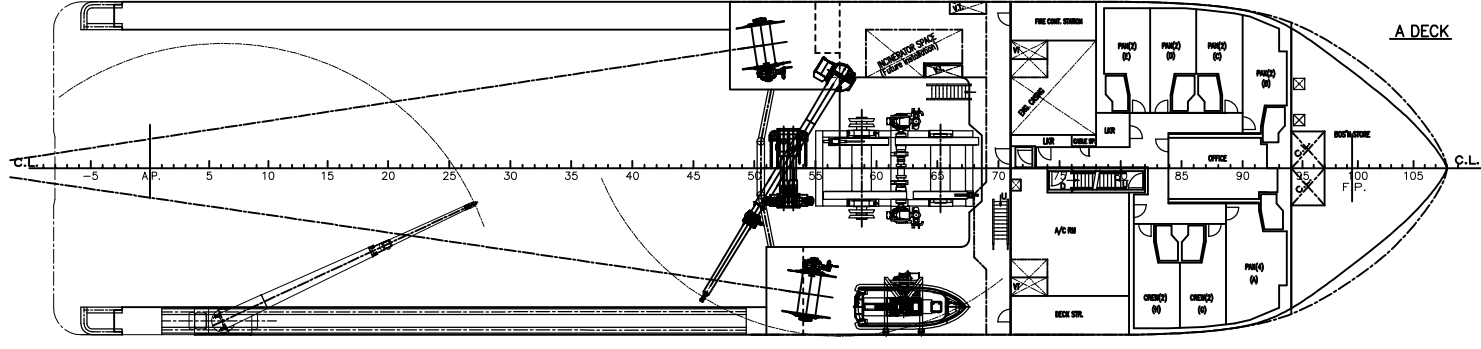
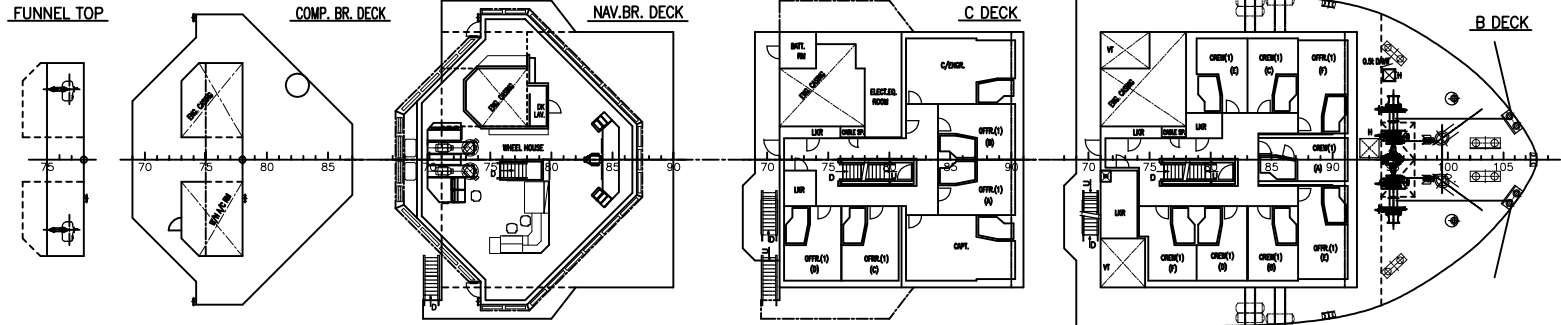
Firefighting System	FiFi 1
FiFi Pump	2 x 1,762 m <sup>3</sup> /hr
FiFi Monitors	2 x 1,200 m <sup>3</sup> /hr
Spray Booms	2 x 6.0 m/Fixed nozzle
Dispersant Capacity	12.19 m <sup>3</sup>
Foam Capacity	23.53 m <sup>3</sup>
Rescue Boat	1 x 15 man/water-jet/144 hp
Life Rafts	6 x 16 man
Life Buoys	10
Life Jackets	42

PRINCIPAL PARTICULARS

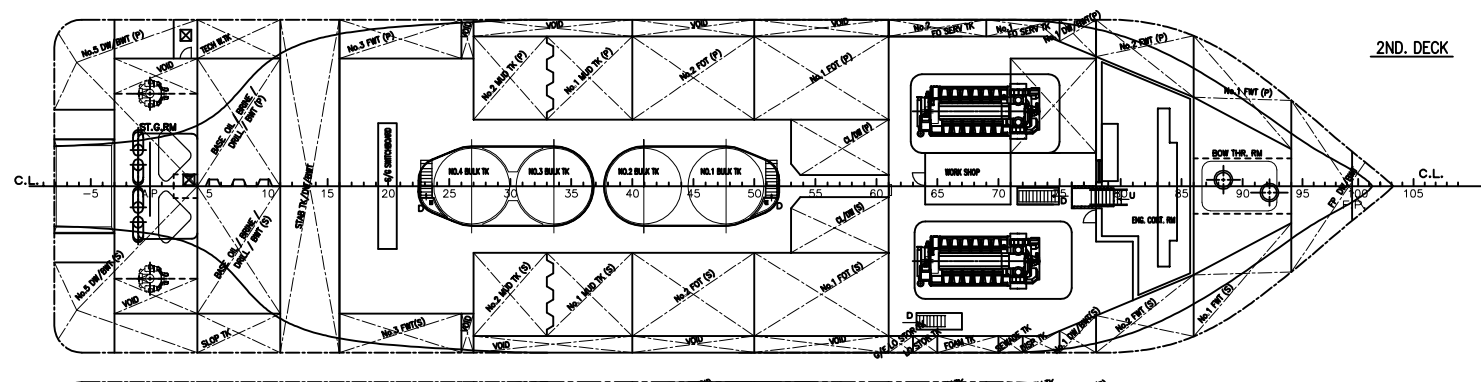
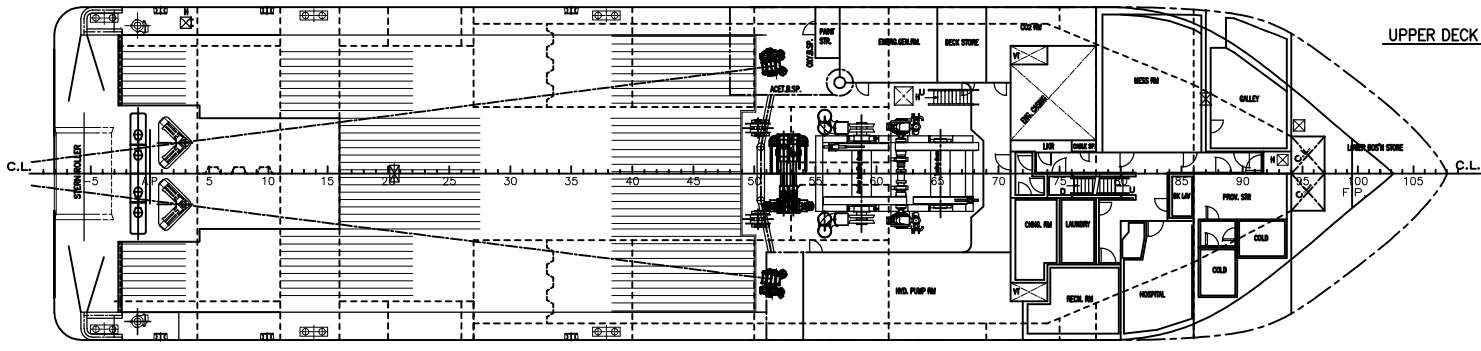
LENGTH(O.A)                    APPROX. 75.3m  
 LENGTH(B.P)                    65.0m  
 BREADTH(MLD)                18.00m  
 DEPTH(MLD)                    8.10m  
 DESIGNED DRAFT(MLD)        6.00m  
 MAX. SUMMER DRAFT(MLD)    6.60m



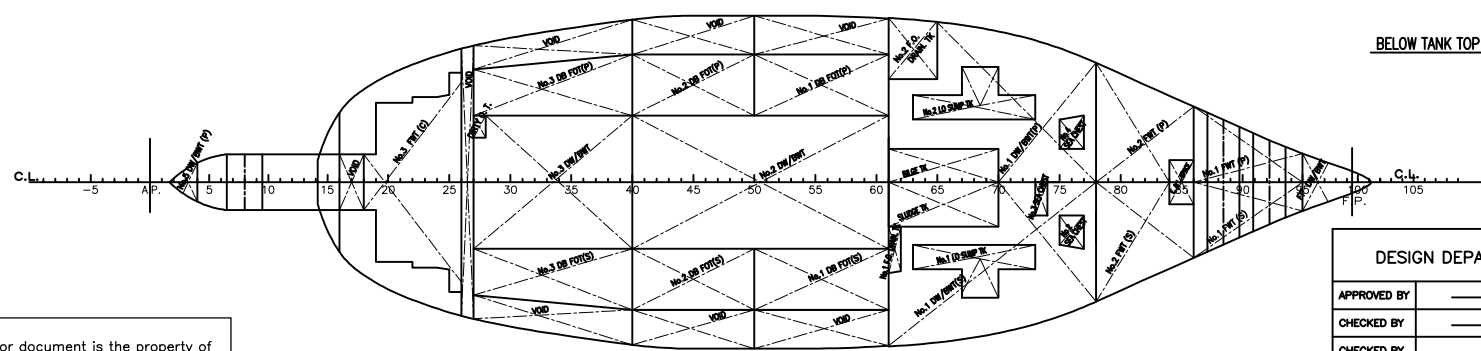
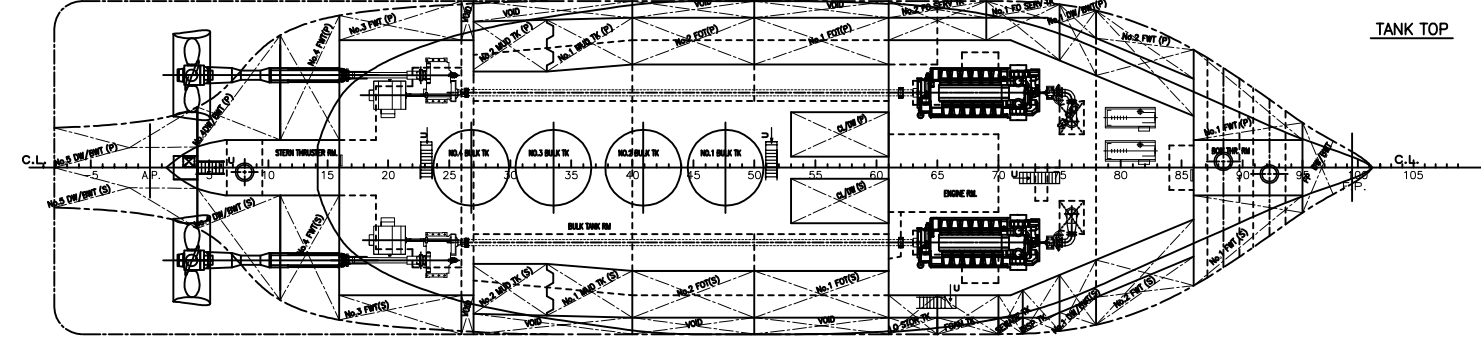
FRONT VIEW  
(LOOKING AFT)



MIDSHIP SECTION  
(LOOKING FORWARD)



AFT VIEW  
(LOOKING FORWARD)



This drawing or document is the property of Universal Shipbuilding Corp. and must in no case wholly or partially be copied, shown or given to a third party without the expressed consent of Universal Shipbuilding Corp.

DESIGN DEPARTMENT	HULL No.	180T BP AHTS
APPROVED BY	SN0.0056/57	
CHECKED BY	<b>GENERAL ARRANGEMENT</b>	
CHECKED BY		
DESIGNED BY		
DRAWN BY		
DATE OF DRAWING	June 18, 2009	
SCALE	1/200	
Universal Shipbuilding Corporation		DWG. NO. 4011100-10
		REV. 1
		DATE OF ISSUE