

POSH DARING


7,000 BHP / 90 TBP / DP2 / AHTS Call Sign: 9V8497
Class Notation ABS +A1, Towing Vessel, Fire Fighting Vessel Class 2, Offshore Support Vessel AH, (E), +AMS, +DPS-2, Oil Recovery Capability Class 2

Principal Particulars

Flag	Singapore
Year Built	2013
Place Built	PRM Offshore Heavy Industries Pte Ltd
Design Draft	6.25 m
Max Summer Draft	6.25 m
Gross Tonnage	3,208.00
Net Tonnage	962
Deadweight (Max Draft)	3,083 T @ 6.25 m
Displacement	5,914 T
IMO No.	9503081
Design	81m Anchor Handling / Supply Vessel

Dimensions

Length Overall	81.00 m
Beam Overall	16.80 m
Depth Moulded	7.50 m

Performance

Max Speed	12.00 kts
Economical Speed	10.00 kts

* Subject to actual weather and operating conditions

Cargo Deck

Deck Cargo Area	650 m ²
Deck Cargo Dimension	45.0 m x 14.0 m
Deck Cargo Capacity	1,200 T
Deck Strength	5.0 T/m ²
Reefer Point	6 x 440V

Capacities

Fuel Tank	590.0 m ³
Cargo Fuel Oil Tank*	830.0 m ³ (shared with base oil)
Fresh Water	370.0 m ³
Drill Water *	1,015 m ³ (shared with oil recovery)
Base Oil*	376.0 m ³ (shared with cargo fuel oil)
Mud Tank*	605.0 m ³ (shared with brine)
Brine Tank*	605.0 m ³ (shared with mud)
Dry Bulk Tank	339.6 m ³ (in 6 tanks)
Oil Recovery*	1,515 m ³ (shared with drill water)

* Indicates tanks with shared capacity

Discharging Rates

Drill Water/Pump	2 x 150 m ³ /hr @ 80 m head
Fresh Water/Pump	2 x 100 m ³ /hr @ 80 m head
Fuel/Pump	2 x 150 m ³ /hr @ 80 m head
Brine/Pump	2 x 150 m ³ /hr @ 80 m head
Liquid Mud/Pump	2 x 100 m ³ /hr @ 80 m head
Dry Bulk Tank	339.6 m ³ (in 6 tanks)

Accommodation

1 – Berth Cabins	2
2 – Berth Cabins	4
4 – Berth Cabins	14
Total (POB)	66

Main Engines & Generators

Main Engine	Yanmar 8EY26, 2 x 2,560 kW each
Generator	Caterpillar 3412, 6 x 590kW each + Caterpillar C4.4, 1 x 92kW

Thrusters & Propulsion

Bow Thruster	Kawasaki KT-88B3, 2 x 550 kW (2 x 9.0T)
Propeller	Kawasaki KST-220 ZC/B Rexpeller Azimuth Thruster in Kort nozzle

Deck Crane

Fixed Crane	SWL 3.0T @ 8 m
-------------	----------------

Anchor Handling/Tow Equipment

Tow/Anchor Handling Winch	Rolls Royce Brattvaag SL150W-2T double drum waterfall type
Stall Pull Capacity	160.0 T
Brake Holding Capacity	225.0 T
Tow Drum Capacity	1,200.0 m x 52.0 mm dia wire
Anchor Handling Capacity	1,200.0 m x 52.0 mm dia wire
Storage Reel Capacity	3 x 1,800.0 m x 52.0 mm dia wire
Tugger Winch	2 x 10.0 T each
Capstan	2 x 5.0 T each
Shark Jaws	1 x Triplex H-200, SWL 200.0 T
Tow Pins	1 x Triplex S-200, SWL 200.0 T
Stem Roller	5.0 m x 2.5 m dia, SWL 300.0 T

Tow/Anchor Handling Wires

Main Tow Wire	1,000.0 m x 52.0 mm dia wire
Spare Tow Wire	1,000.0 m x 52.0 mm dia wire
Anchor Handling Wire	1,000.0 m x 52.0 mm dia wire

Mooring Equipment

Anchor	2 x 2,500 kg HHP Anchor
Anchor Chain	2 x 17 shackles x 42.0 mm dia
Anchor Windlass	13.0 T @ 0-12 m/min

Dynamic Positioning System

DP Class	DP 2 L3 NMS6000
References	2 x DGPS + 1 x Cyscan
VRU	2

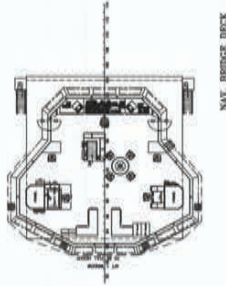
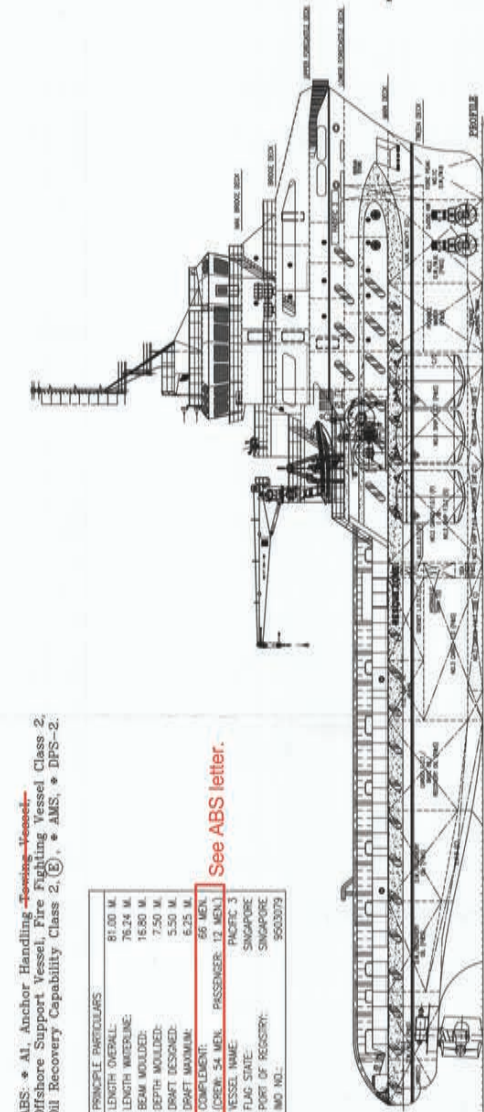
Fire Fighting and Rescue

Firefighting System	FiFi 2
FiFi Pump	2 x 1,800 m ³ /hr + 1 x 3,600 m ³ /hr
FiFi Monitor	4 x 1,800 m ³ /hr
Spray Boom	2 x 6.0 m
Dispersant Capacity	29.0 m ³
Foam Capacity	29.0 m ³
Rescue Boat	1 x 10-man rigid hull waterjet FRC, 218 hp, 20 kts
Life Raft	8 x 25-man
Life Buoy	12
Life Jacket	90
Fixed H2S Detection System	Yes

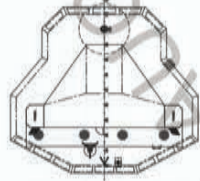
ABS: * A1, Anchor Handling Tugboat-Supply Vessel, * Offshore Support Vessel, Fire Fighting Vessel, Class 2, Oil Recovery Capability Class 2, (A), * AMS, * DPS-2.

PRINCIPLE PARTICULARS	81.00 M.
LENGTH OVERALL	78.24 M.
LENGTH WATERLINE	18.80 M.
BEAM MOULDED	7.50 M.
DEPTH MOULDED	5.50 M.
DRAFT MAXIMUM	8.25 M.
COMPLEMENT	66 MEN.
CREW	54 MEN.
PASSENGERS	12 MEN.
VESSEL NAME	MAFIC 3
TYPE OF VESSEL	ANCHOR HANDLING TUGBOAT-SUPPLY VESSEL
PORT OF REGISTRY	SINGAPORE
IMO NO.	9503079

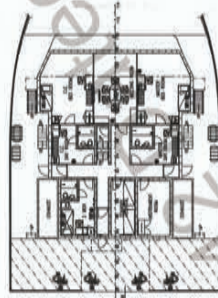
See ABS letter.



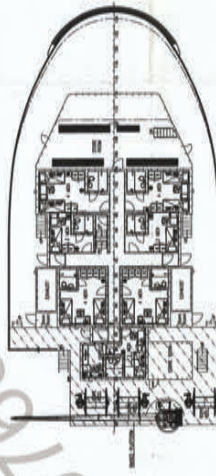
MAIN DECK



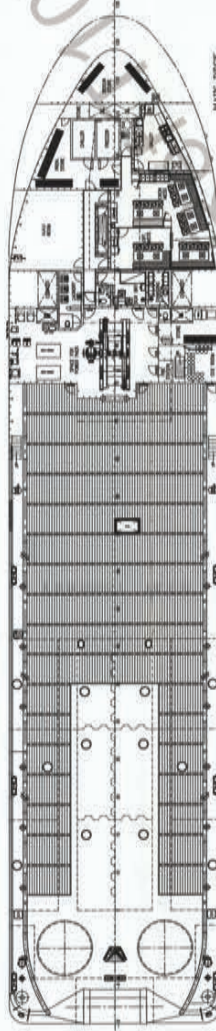
FORECASTLE DECK



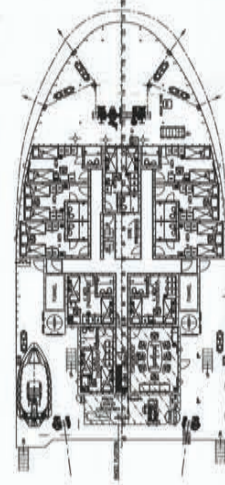
BRIDGE DECK
11.1 M x 11.1 M
TOTAL AREA: 123.21 M²



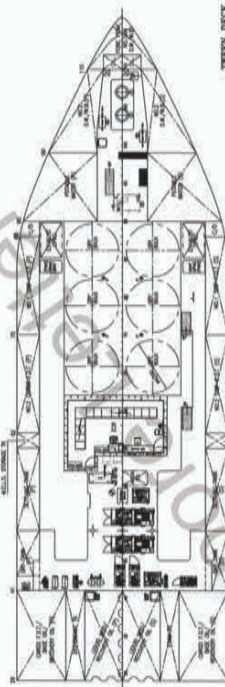
UPPER FORECASTLE DECK
11.1 M x 11.1 M
TOTAL AREA: 123.21 M²



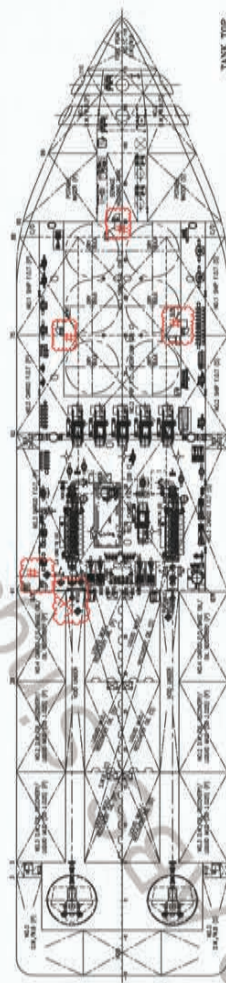
MAIN DECK



LOWER FORECASTLE DECK
11.1 M x 11.1 M
TOTAL AREA: 123.21 M²




TWEEN DECK



TANK TOP

REVIEWED
Details of this review are as indicated in the ABS Letter



11041.1	UPPER FORECASTLE DECK FROM 11.1 M TO 11.1 M	2	BRIDGE
11041.2	UPPER FORECASTLE DECK FROM 11.1 M TO 11.1 M	2	BRIDGE
11041.3	UPPER FORECASTLE DECK FROM 11.1 M TO 11.1 M	2	BRIDGE
11041.4	UPPER FORECASTLE DECK FROM 11.1 M TO 11.1 M	2	BRIDGE
11041.5	UPPER FORECASTLE DECK FROM 11.1 M TO 11.1 M	2	BRIDGE
11041.6	UPPER FORECASTLE DECK FROM 11.1 M TO 11.1 M	2	BRIDGE
11041.7	UPPER FORECASTLE DECK FROM 11.1 M TO 11.1 M	2	BRIDGE
11041.8	UPPER FORECASTLE DECK FROM 11.1 M TO 11.1 M	2	BRIDGE
11041.9	UPPER FORECASTLE DECK FROM 11.1 M TO 11.1 M	2	BRIDGE
11041.10	UPPER FORECASTLE DECK FROM 11.1 M TO 11.1 M	2	BRIDGE
11041.11	UPPER FORECASTLE DECK FROM 11.1 M TO 11.1 M	2	BRIDGE
11041.12	UPPER FORECASTLE DECK FROM 11.1 M TO 11.1 M	2	BRIDGE
11041.13	UPPER FORECASTLE DECK FROM 11.1 M TO 11.1 M	2	BRIDGE
11041.14	UPPER FORECASTLE DECK FROM 11.1 M TO 11.1 M	2	BRIDGE
11041.15	UPPER FORECASTLE DECK FROM 11.1 M TO 11.1 M	2	BRIDGE
11041.16	UPPER FORECASTLE DECK FROM 11.1 M TO 11.1 M	2	BRIDGE
11041.17	UPPER FORECASTLE DECK FROM 11.1 M TO 11.1 M	2	BRIDGE
11041.18	UPPER FORECASTLE DECK FROM 11.1 M TO 11.1 M	2	BRIDGE
11041.19	UPPER FORECASTLE DECK FROM 11.1 M TO 11.1 M	2	BRIDGE
11041.20	UPPER FORECASTLE DECK FROM 11.1 M TO 11.1 M	2	BRIDGE
11041.21	UPPER FORECASTLE DECK FROM 11.1 M TO 11.1 M	2	BRIDGE
11041.22	UPPER FORECASTLE DECK FROM 11.1 M TO 11.1 M	2	BRIDGE
11041.23	UPPER FORECASTLE DECK FROM 11.1 M TO 11.1 M	2	BRIDGE
11041.24	UPPER FORECASTLE DECK FROM 11.1 M TO 11.1 M	2	BRIDGE
11041.25	UPPER FORECASTLE DECK FROM 11.1 M TO 11.1 M	2	BRIDGE
11041.26	UPPER FORECASTLE DECK FROM 11.1 M TO 11.1 M	2	BRIDGE
11041.27	UPPER FORECASTLE DECK FROM 11.1 M TO 11.1 M	2	BRIDGE
11041.28	UPPER FORECASTLE DECK FROM 11.1 M TO 11.1 M	2	BRIDGE
11041.29	UPPER FORECASTLE DECK FROM 11.1 M TO 11.1 M	2	BRIDGE
11041.30	UPPER FORECASTLE DECK FROM 11.1 M TO 11.1 M	2	BRIDGE
11041.31	UPPER FORECASTLE DECK FROM 11.1 M TO 11.1 M	2	BRIDGE
11041.32	UPPER FORECASTLE DECK FROM 11.1 M TO 11.1 M	2	BRIDGE
11041.33	UPPER FORECASTLE DECK FROM 11.1 M TO 11.1 M	2	BRIDGE
11041.34	UPPER FORECASTLE DECK FROM 11.1 M TO 11.1 M	2	BRIDGE
11041.35	UPPER FORECASTLE DECK FROM 11.1 M TO 11.1 M	2	BRIDGE
11041.36	UPPER FORECASTLE DECK FROM 11.1 M TO 11.1 M	2	BRIDGE
11041.37	UPPER FORECASTLE DECK FROM 11.1 M TO 11.1 M	2	BRIDGE
11041.38	UPPER FORECASTLE DECK FROM 11.1 M TO 11.1 M	2	BRIDGE
11041.39	UPPER FORECASTLE DECK FROM 11.1 M TO 11.1 M	2	BRIDGE
11041.40	UPPER FORECASTLE DECK FROM 11.1 M TO 11.1 M	2	BRIDGE
11041.41	UPPER FORECASTLE DECK FROM 11.1 M TO 11.1 M	2	BRIDGE
11041.42	UPPER FORECASTLE DECK FROM 11.1 M TO 11.1 M	2	BRIDGE
11041.43	UPPER FORECASTLE DECK FROM 11.1 M TO 11.1 M	2	BRIDGE
11041.44	UPPER FORECASTLE DECK FROM 11.1 M TO 11.1 M	2	BRIDGE
11041.45	UPPER FORECASTLE DECK FROM 11.1 M TO 11.1 M	2	BRIDGE
11041.46	UPPER FORECASTLE DECK FROM 11.1 M TO 11.1 M	2	BRIDGE
11041.47	UPPER FORECASTLE DECK FROM 11.1 M TO 11.1 M	2	BRIDGE
11041.48	UPPER FORECASTLE DECK FROM 11.1 M TO 11.1 M	2	BRIDGE
11041.49	UPPER FORECASTLE DECK FROM 11.1 M TO 11.1 M	2	BRIDGE
11041.50	UPPER FORECASTLE DECK FROM 11.1 M TO 11.1 M	2	BRIDGE
11041.51	UPPER FORECASTLE DECK FROM 11.1 M TO 11.1 M	2	BRIDGE
11041.52	UPPER FORECASTLE DECK FROM 11.1 M TO 11.1 M	2	BRIDGE
11041.53	UPPER FORECASTLE DECK FROM 11.1 M TO 11.1 M	2	BRIDGE
11041.54	UPPER FORECASTLE DECK FROM 11.1 M TO 11.1 M	2	BRIDGE
11041.55	UPPER FORECASTLE DECK FROM 11.1 M TO 11.1 M	2	BRIDGE
11041.56	UPPER FORECASTLE DECK FROM 11.1 M TO 11.1 M	2	BRIDGE
11041.57	UPPER FORECASTLE DECK FROM 11.1 M TO 11.1 M	2	BRIDGE
11041.58	UPPER FORECASTLE DECK FROM 11.1 M TO 11.1 M	2	BRIDGE
11041.59	UPPER FORECASTLE DECK FROM 11.1 M TO 11.1 M	2	BRIDGE
11041.60	UPPER FORECASTLE DECK FROM 11.1 M TO 11.1 M	2	BRIDGE
11041.61	UPPER FORECASTLE DECK FROM 11.1 M TO 11.1 M	2	BRIDGE
11041.62	UPPER FORECASTLE DECK FROM 11.1 M TO 11.1 M	2	BRIDGE
11041.63	UPPER FORECASTLE DECK FROM 11.1 M TO 11.1 M	2	BRIDGE
11041.64	UPPER FORECASTLE DECK FROM 11.1 M TO 11.1 M	2	BRIDGE
11041.65	UPPER FORECASTLE DECK FROM 11.1 M TO 11.1 M	2	BRIDGE
11041.66	UPPER FORECASTLE DECK FROM 11.1 M TO 11.1 M	2	BRIDGE
11041.67	UPPER FORECASTLE DECK FROM 11.1 M TO 11.1 M	2	BRIDGE
11041.68	UPPER FORECASTLE DECK FROM 11.1 M TO 11.1 M	2	BRIDGE
11041.69	UPPER FORECASTLE DECK FROM 11.1 M TO 11.1 M	2	BRIDGE
11041.70	UPPER FORECASTLE DECK FROM 11.1 M TO 11.1 M	2	BRIDGE
11041.71	UPPER FORECASTLE DECK FROM 11.1 M TO 11.1 M	2	BRIDGE
11041.72	UPPER FORECASTLE DECK FROM 11.1 M TO 11.1 M	2	BRIDGE
11041.73	UPPER FORECASTLE DECK FROM 11.1 M TO 11.1 M	2	BRIDGE
11041.74	UPPER FORECASTLE DECK FROM 11.1 M TO 11.1 M	2	BRIDGE
11041.75	UPPER FORECASTLE DECK FROM 11.1 M TO 11.1 M	2	BRIDGE
11041.76	UPPER FORECASTLE DECK FROM 11.1 M TO 11.1 M	2	BRIDGE
11041.77	UPPER FORECASTLE DECK FROM 11.1 M TO 11.1 M	2	BRIDGE
11041.78	UPPER FORECASTLE DECK FROM 11.1 M TO 11.1 M	2	BRIDGE
11041.79	UPPER FORECASTLE DECK FROM 11.1 M TO 11.1 M	2	BRIDGE
11041.80	UPPER FORECASTLE DECK FROM 11.1 M TO 11.1 M	2	BRIDGE
11041.81	UPPER FORECASTLE DECK FROM 11.1 M TO 11.1 M	2	BRIDGE
11041.82	UPPER FORECASTLE DECK FROM 11.1 M TO 11.1 M	2	BRIDGE
11041.83	UPPER FORECASTLE DECK FROM 11.1 M TO 11.1 M	2	BRIDGE
11041.84	UPPER FORECASTLE DECK FROM 11.1 M TO 11.1 M	2	BRIDGE
11041.85	UPPER FORECASTLE DECK FROM 11.1 M TO 11.1 M	2	BRIDGE
11041.86	UPPER FORECASTLE DECK FROM 11.1 M TO 11.1 M	2	BRIDGE
11041.87	UPPER FORECASTLE DECK FROM 11.1 M TO 11.1 M	2	BRIDGE
11041.88	UPPER FORECASTLE DECK FROM 11.1 M TO 11.1 M	2	BRIDGE
11041.89	UPPER FORECASTLE DECK FROM 11.1 M TO 11.1 M	2	BRIDGE
11041.90	UPPER FORECASTLE DECK FROM 11.1 M TO 11.1 M	2	BRIDGE
11041.91	UPPER FORECASTLE DECK FROM 11.1 M TO 11.1 M	2	BRIDGE
11041.92	UPPER FORECASTLE DECK FROM 11.1 M TO 11.1 M	2	BRIDGE
11041.93	UPPER FORECASTLE DECK FROM 11.1 M TO 11.1 M	2	BRIDGE
11041.94	UPPER FORECASTLE DECK FROM 11.1 M TO 11.1 M	2	BRIDGE
11041.95	UPPER FORECASTLE DECK FROM 11.1 M TO 11.1 M	2	BRIDGE
11041.96	UPPER FORECASTLE DECK FROM 11.1 M TO 11.1 M	2	BRIDGE
11041.97	UPPER FORECASTLE DECK FROM 11.1 M TO 11.1 M	2	BRIDGE
11041.98	UPPER FORECASTLE DECK FROM 11.1 M TO 11.1 M	2	BRIDGE
11041.99	UPPER FORECASTLE DECK FROM 11.1 M TO 11.1 M	2	BRIDGE
11041.100	UPPER FORECASTLE DECK FROM 11.1 M TO 11.1 M	2	BRIDGE

81 M. ANCHOR HANDLING/SUPPLY VESSEL

SHIP TYPE: ANCHOR HANDLING/SUPPLY VESSEL

GENERAL ARRANGEMENT

OWNER: PACIFIC OFFSHORE SERVICE PTE. LTD. (IMO NO. 781)

DESIGNER: WARTSILA (IMO NO. 781)

CLASS: WARTSILA

SCALE: 1:200

DRAWING NO.: C4228/G-1

NO. OF SHEETS: 2

DATE: 11.07.08

DESIGNER: WARTSILA

SCALE: 1:200

DRAWING NO.: C4228/G-1

NO. OF SHEETS: 2

DATE: 11.07.08

Access door in the bulkhead is to be provided with a notice affixed to each such closing appliance to the effect that it is to be kept closed.

X Weighted door to comply with Rules 3-2-7/7.1.

