

POSH GENTIL



8,000 BHP/ 2405 DWT/ DP2/ Fluids Processing Vessel

Call sign: XCTA2

Class Notation DNV +A1, Fire Fighting Vessel Class 1, Offshore Support Vessel, (E), +AMS + DPS-2

Principal Particulars

| | |
|--------------------------|-------------------------------------|
| Flag | Mexico |
| Year Built | 2010 |
| Place Built | Yuexin Shipbuilding Co., Ltd. China |
| Design Draft | 5.49 m |
| Max Draft | 5.90 m |
| Gross Tonnage | 2,538.0 T |
| Net Tonnage | 761.0 T |
| Deadweight (Max Draught) | 2,828.0 T @ 5.9 m draft |
| Displacement | 4,817.0 T |
| IMO No. | 9550230 |
| Design | FOCAL Marine 69.9m PSV (P-1531) |

Dimensions

| | |
|----------------|---------|
| Length Overall | 69.90 m |
| Beam Overall | 16.60 m |
| Depth Moulded | 7.20 m |

Performance

| | |
|------------------|-----------|
| Max Speed | 12.00 kts |
| Economical Speed | 10.00 kts |

* Subject to actual weather and operating conditions

Cargo Deck

| | |
|----------------------|-------------------------|
| Deck Cargo Area | 450 m ² |
| Deck Cargo Dimension | 32.4 m x 12.7 m |
| Deck Cargo Capacity | 900.0 T |
| Deck Strength | 5 T/m ² |
| Reefer Points | 4 (2 x 440v , 2 x 220v) |

Total Capacities

| | |
|-----------------|-----------------------------------|
| Fuel Tank | 980.0 m ³ |
| Fresh Water | 480.0 m ³ |
| Drill Water * | 770.0 m ³ |
| Ballast Water * | 770.0 m ³ |
| Mud Tank * | 520.0 m ³ |
| Brine Tank * | 150.0 m ³ |
| Dry Bulk Tank | 250.0 m ³ (in 4 tanks) |

* Indicates tanks with shared capacity

Discharging Rates

| | |
|------------------|--------------------------------------|
| Drill Water/Pump | 1 x 150 m ³ /hr@70 m head |
| Fresh Water/Pump | 1 x 150 m ³ /hr@70 m head |
| Fuel/Pump | 1 x 150 m ³ /hr@70 m head |
| Brine/Pump | 1 x 80 m ³ /hr@120 m head |
| Liquid mud/Pump | 2 x 125 m ³ /hr@80 m head |
| Dry Bulk Tank | 1 x 75 m ³ /hr@20 m head |

Accommodation

| | |
|------------------|----|
| 1 – Berth Cabins | 4 |
| 2 – Berth Cabins | 4 |
| 4 – Berth Cabins | 7 |
| Total (POB) | 40 |

Machinery & Equipment

| | |
|---------------------|--|
| Main Engine | MAN 2 x 3,970 BHP @ 800 RPM |
| Generators | Leroy Somer 2 x 1200 kW @ 440 V 3Ph 60 Hz Caterpillar 2 x 370 kW @440 V 3Ph 60 Hz |
| Emergency Generator | Volvo 1 x 99 kW @ 440 V 3Ph 60 Hz. |

Thruster & Propulsion

| | |
|----------------|---|
| Bow Thruster | 2 x 430kW CP rated 6.5T Tunnel thruster |
| Stern Thruster | 1 x 430kW CP rated 6.5T Tunnel thruster |

Deck Crane

| | |
|-------------|--------------------------|
| Fixed Crane | SWL 5.0 T @ 12.0m radius |
|-------------|--------------------------|

Mooring Equipment

| | |
|-----------------|--------------------------------------|
| Anchors | 2 x AC-14 Type Anchor; 2,460 kg each |
| Anchor Windlass | 1 x 10.0 T each @ 0-9 m/min |
| Tugger Winch | 2 x 10.0 T each @ 16 m/min |
| Capstans | 2 x 5.0 T each @ 0-15 m/min |

Dynamic Positioning System

| | |
|------------|--|
| DP Class | Converteam ADP-2 system + Converteam (IJS)System |
| References | 2 x DGPS + 1 x Cyscan system |

Fire Fighting and Rescue

| | |
|---------------------|------------------------------|
| Firefighting System | FiFi 1 |
| FiFi Pump | 2 x 1.650 m ³ /hr |
| FiFi Monitors | 1 x 1200 m ³ /hr |
| Spray Booms | 2 x 6.0 m/Fixed Nozzle |
| Dispersant Capacity | 10.0 m ³ |
| Foam Capacity | 10.89 m ³ |
| Rescue Boat | 1 x 15 man/rigid/124 hp |
| Life rafts | 6 x 25 man |
| Life Buoys | 8 |
| Life Jackets | 50 |

CARGO CAPACITY PLAN

| Ballast Water (S.G = 1.025) | |
|-----------------------------|-------------------------------|
| Compartment | Volume 100% m ³ |
| NO.1 D.W./BW. | 131.59 |
| NO.2 D.W./BW. (P) | 101 |
| NO.2 D.W./BW. (S) | 97.33 |
| NO.3 D.W./BW. (P) | 100.9 |
| NO.3 D.W./BW. (S) | 100.9 |
| NO.4 D.W./BW. | 253.62 |
| NO.5 D.W./BW. | 179.51 |
| NO.6 D.W./BW. (P) | 33.58 |
| NO.6 D.W./BW. (S) | 38.21 |
| SUM | 1036.64 |

| Fuel Oil Tank (S.G = 0.900) | |
|-----------------------------|-------------------------------|
| Compartment | Volume 100% m ³ |
| NO. 1 F.O TANK (P) | 87.41 |
| NO.1 F.O. TK. (DBP) | 22.68 |
| NO.1 F.O. TK. (S) | 87.41 |
| NO.1 F.O. TK. (DBS) | 30.04 |
| NO.1 F.O. TK. (C) | 67.1 |
| NO.2 F.O. TK. (P) | 84.6 |
| NO.2 F.O. TK. (S) | 84.6 |
| NO.3 F.O. TK. (P) | 27.12 |
| NO.3 F.O. TK. (S) | 27.12 |
| NO.3 F.O. TK. (C) | 49.39 |
| NO.4 F.O. TK. | 74.09 |
| NO.5 F.O. TK. (P) | 57.22 |
| NO.5 F.O. TK. (S) | 57.22 |
| NO.6 F.O. TK. (P) | 148.49 |
| NO.6 F.O. TK. (S) | 148.49 |
| NO.7 F.O. TK. (P) | 87.13 |
| NO.7 F.O. TK. (S) | 87.13 |
| F.O. DAY TANK (P) | 32.3 |
| F.O. DAY TANK (S) | 32.3 |
| SUM | 1291.84 |

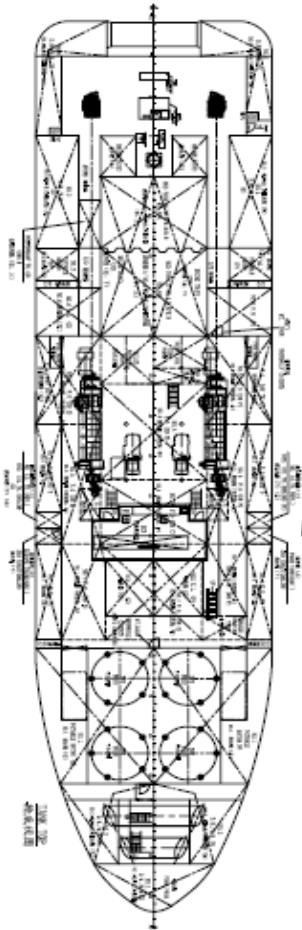
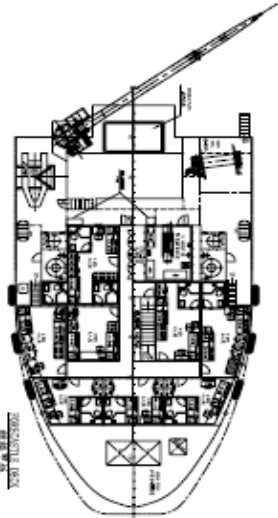
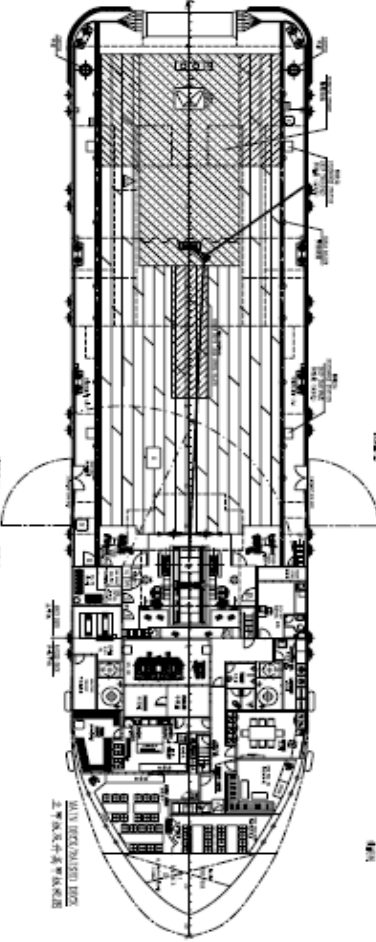
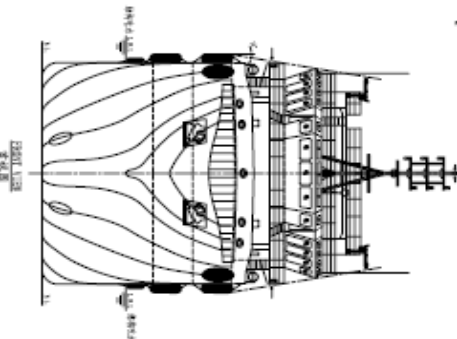
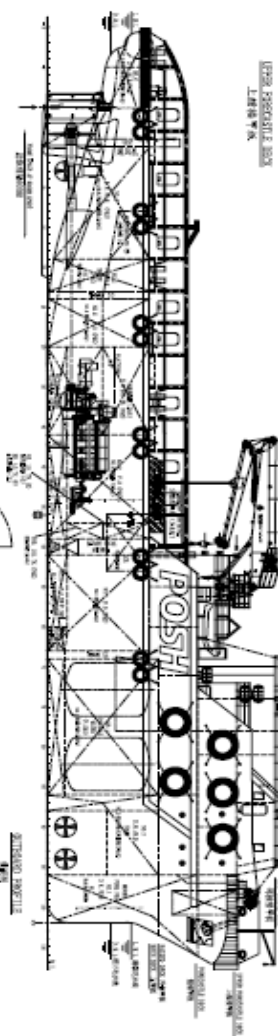
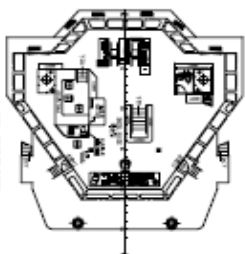
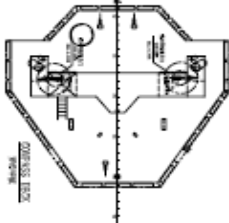
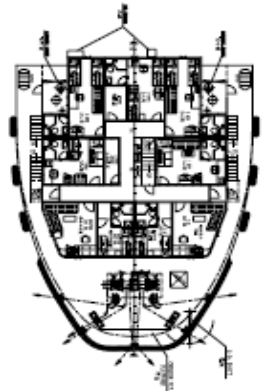
| MISCELLANEOUS TANKS | |
|---------------------|-------------------------------|
| Compartment | Volume 100% m ³ |
| ME. LO. TK (P) | 6.99 |
| AE. LO. TK (S) | 6.99 |
| S.C. F/P (P) | 4.77 |
| S.C. F/P (S) | 4.777 |
| SEA CHEST (P) | 4.26 |
| SEA CHEST (S) | 4.26 |
| DIRTY OIL TANK | 12.39 |
| TEMP LO TK | 5.54 |
| BILGE HOLDING TK | 17.93 |
| HYD. OIL TK (P) | 5.54 |
| HYD. OIL TK (S) | 5.29 |
| SUM | 78.737 |

| Other Tanks | |
|------------------|-------------------------------|
| Compartment | Volume 100% m ³ |
| MUD TANK 1 | 263.51 |
| MUD TANK 2 | 179.51 |
| SEWAGE TANK | 6.79 |
| BRINE TANK (P) | 100.9 |
| BRINE TANK (S) | 100.9 |
| DISPERSANT (S) | 14.27 |
| FOAM | 10.89 |
| SUM | 676.77 |

| COFFERDAMS | |
|----------------------|-------------------------------|
| Compartment | Volume 100% m ³ |
| NO.1 COFFERDAM (P) | 7.36 |
| NO.1 COFFERDAM (S) | 7.36 |
| SUM | 14.72 |

| Fresh Water Tank (S.G = 1.000) | |
|--------------------------------|-------------------------------|
| Compartment | Volume 100% m ³ |
| NO.1 POTABLE WATER (P) | 252.48 |
| NO.1 POTABLE WATER (S) | 252.48 |
| SUM | 504.96 |

| Fresh Water Tank (S.G = 1.000) | |
|--------------------------------|-------------------------------|
| Compartment | Volume 100% m ³ |
| DRY BULK | 249.2 |
| SUM | 249.2 |



- LEGEND**
- STRUCTURAL MEMBERS**
- 4.4 LOWER DECK
 - 4.5 LOWER DECK
 - 4.6 LOWER DECK
 - 4.7 LOWER DECK
 - 4.8 LOWER DECK
 - 4.9 LOWER DECK
 - 4.10 LOWER DECK
 - 4.11 LOWER DECK
 - 4.12 LOWER DECK
 - 4.13 LOWER DECK
 - 4.14 LOWER DECK
 - 4.15 LOWER DECK
 - 4.16 LOWER DECK
 - 4.17 LOWER DECK
 - 4.18 LOWER DECK
 - 4.19 LOWER DECK
 - 4.20 LOWER DECK
 - 4.21 LOWER DECK
 - 4.22 LOWER DECK
 - 4.23 LOWER DECK
 - 4.24 LOWER DECK
 - 4.25 LOWER DECK
 - 4.26 LOWER DECK
 - 4.27 LOWER DECK
 - 4.28 LOWER DECK
 - 4.29 LOWER DECK
 - 4.30 LOWER DECK
 - 4.31 LOWER DECK
 - 4.32 LOWER DECK
 - 4.33 LOWER DECK
 - 4.34 LOWER DECK
 - 4.35 LOWER DECK
 - 4.36 LOWER DECK
 - 4.37 LOWER DECK
 - 4.38 LOWER DECK
 - 4.39 LOWER DECK
 - 4.40 LOWER DECK
 - 4.41 LOWER DECK
 - 4.42 LOWER DECK
 - 4.43 LOWER DECK
 - 4.44 LOWER DECK
 - 4.45 LOWER DECK
 - 4.46 LOWER DECK
 - 4.47 LOWER DECK
 - 4.48 LOWER DECK
 - 4.49 LOWER DECK
 - 4.50 LOWER DECK
 - 4.51 LOWER DECK
 - 4.52 LOWER DECK
 - 4.53 LOWER DECK
 - 4.54 LOWER DECK
 - 4.55 LOWER DECK
 - 4.56 LOWER DECK
 - 4.57 LOWER DECK
 - 4.58 LOWER DECK
 - 4.59 LOWER DECK
 - 4.60 LOWER DECK
 - 4.61 LOWER DECK
 - 4.62 LOWER DECK
 - 4.63 LOWER DECK
 - 4.64 LOWER DECK
 - 4.65 LOWER DECK
 - 4.66 LOWER DECK
 - 4.67 LOWER DECK
 - 4.68 LOWER DECK
 - 4.69 LOWER DECK
 - 4.70 LOWER DECK
 - 4.71 LOWER DECK
 - 4.72 LOWER DECK
 - 4.73 LOWER DECK
 - 4.74 LOWER DECK
 - 4.75 LOWER DECK
 - 4.76 LOWER DECK
 - 4.77 LOWER DECK
 - 4.78 LOWER DECK
 - 4.79 LOWER DECK
 - 4.80 LOWER DECK
 - 4.81 LOWER DECK
 - 4.82 LOWER DECK
 - 4.83 LOWER DECK
 - 4.84 LOWER DECK
 - 4.85 LOWER DECK
 - 4.86 LOWER DECK
 - 4.87 LOWER DECK
 - 4.88 LOWER DECK
 - 4.89 LOWER DECK
 - 4.90 LOWER DECK
 - 4.91 LOWER DECK
 - 4.92 LOWER DECK
 - 4.93 LOWER DECK
 - 4.94 LOWER DECK
 - 4.95 LOWER DECK
 - 4.96 LOWER DECK
 - 4.97 LOWER DECK
 - 4.98 LOWER DECK
 - 4.99 LOWER DECK
 - 5.00 LOWER DECK

AS BUILT

SHIP NAME: POSH VOYAGER
 IMO: 9494321

YVES ROYER & CO. LTD.
 1000 GERRARD ST. E. TORONTO, ONT. M4W 1G7 CANADA
 TEL: (416) 461-1111 FAX: (416) 461-1112
 WWW.YVESROYER.COM